

GLASS LENS POWER STROBE®

The glass lens POWER STROBE® offers users with heavy duty applications a visible signal that will operate trouble free in the day-to-day environment of steel mills and similar facilities with corrosive, high temperature, shock and vibration conditions. The glass lens POWER STROBE® is the best choice for cranes, transfer cars, hot mills and coke plants.

Select from two power supplies, 10 or 15 joules and a stainless steel enclosure option. (15 joule power supply is for 120 VAC only)

- 1,000,000/1,500,000 peak candle power flash, 90 FPM
- NEMA 4 steel enclosure standard, optional stainless steel available
- 250 VDC models are provided with transient surge voltage protection
- Ambient temperature -55C to +85C
- 9" H X 6" W X 6" D, 10 lbs

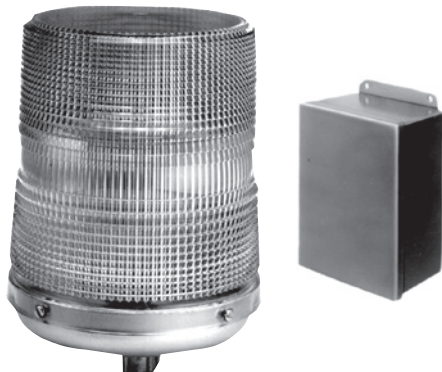
- 3000-GLASS** 250 VDC, 10 joules, 0.07 amps
- 3200-GLASS** 120 VAC, 10 joules, 0.17 amps
- 3300-GLASS** 240 VAC, 10 joules, 0.12 amps
- 3200-GLASS/HP** 120 VAC, 15 joules, 0.25 amps

OPTIONS

/SS Stainless steel enclosure

PARTS

- 3001** Strobe lamps
- 3006A** Glass Lens
- 140030** Guard for glass lens
- 6001** Strobe lamp for HP models



REMOTE MAXI LENS POWER STROBE®

Basic unit with remote power supply and Maxi lens for application that could damage the power supply.

- Lens: 6.75" tall X 5.5" dia.
- Power Supply: 8" tall X 6" W X 4" Deep

COMPLETE UNITS

- 3000/RML** 250 VDC, 10 joules, 0.07 amps
- 3200/RML** 120 VAC, 10 joules, 0.17 amps
- 3300/RML** 240 VAC, 10 joules, 0.12 amps
- 3200HP/RML** 120 VAC 15 joules, 0.25 amps

OPTIONS

/SS Stainless steel enclosure



MAXI POWER STROBE®

Basic unit with high profile lexan lens to give larger, brighter flash.

- 1,000,000 CP @ 90 FPM
- 9" tall X 6.74" square, 6.5 lbs.
- Optional 15 joule 120 VAC power supply
- 3000ML** 250 VDC, 10 joules, 0.07 amps
- 3200ML** 120 VAC, 10 joules, 0.17 amps
- 3300ML** 240 VAC, 10 joules, 0.12 amps
- 3200ML/HP** 120 VAC, 15 joules, 0.25 amps

OPTIONS

/SS Stainless steel enclosure

/GP Heavy duty guard for ML version



REMOTE GLASS LENS POWER STROBE®

The remote glass lens POWER STROBE® has the same features as the standard lens version, except it will give the user a visible signal that can be operated in elevated temperatures or where conditions require the electronic circuitry to be out of harm's way.

Enclosure: 8" X 6" X 4", 6 lbs. Lens: 6 1/2" dia. X 5" high, 4 lbs.

COMPLETE UNITS

- 3000/R-GLASS** 250 VDC Remote glass lens, 10 joules, 0.07 amps
- 3200/R-GLASS** 120 VAC Remote glass lens, 10 joules, 0.17 amps
- 3300/R-GLASS** 240 VAC Remote glass lens, 10 joules, 0.12 amps
- 3200/R/HP-GLASS** 120 VAC Remote glass lens, 15 joules, 0.25 amps

SEPARATE COMPONENTS

- 3015-GLASS** Glass lens strobe head
- 3000-PS** 250 VDC, 10 joule power supply
- 3200-PS** 120 VAC, 10 joule power supply
- 3300-PS** 240 VAC, 10 joule power supply
- 3200-PS/HP** 120 VAC, 15 joule power supply

/SS Stainless steel enclosure option

Specify lens color when ordering.